

FORM 3 ENDTERM 3 EXAM

AGRICULTURE

PAPER 2

NAMEADM.....CLASS.....

Answer ALL Questions in this section.

1. Give two uses of foot bath in a cattle dip. (2mks)

2. Give four characteristics of exotic cattle that make them not to survive well in arid areas. (2mks)

3. Differentiate between roughage and concentrate feeds as used in livestock nutrition. (2mks)

4. List four reasons for treating timber before roofing farm building. (2mks)

5. Give three problems associated with lambing in sheep. (3mks)

6. Give 2 importance of growing grass around a fish pond. (2mks)
7. Outline four qualities of honey. (2mks)
8. Outline four maintenance practices that should be carried out on a hand saw. (2mks)
9. List four management practices that should be carried out during mating season in sheep. (2mks)
10. Give one function of omasum in ruminants. (1mk)
11. State two uses of sickle on the farm. (2mks)
12. State four routes of administering vaccines in poultry. (2mks)

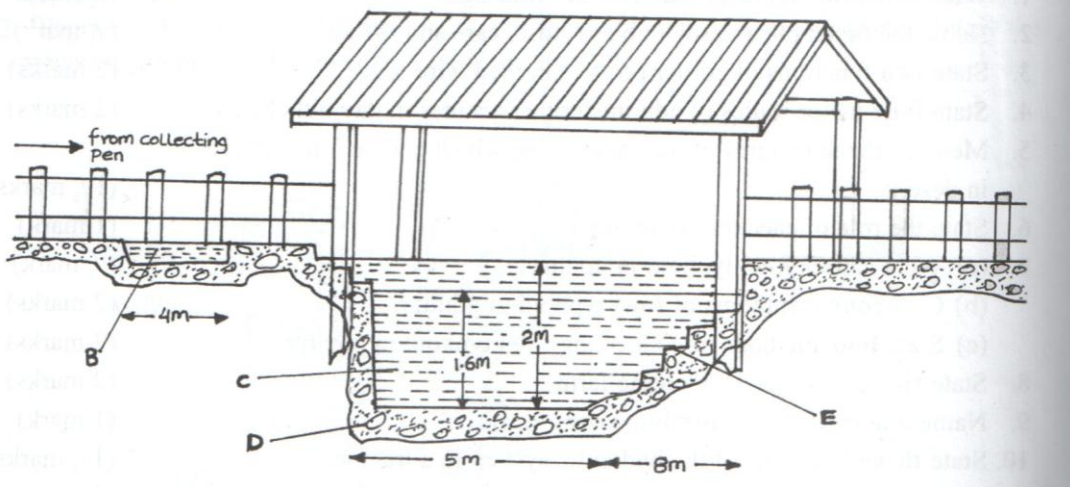
13. State three circumstances which would lead a farmer to cull a high producing dairy cow. (3mks)
14. Give two best methods of indentifying bulls. (1mk)
15. Name four materials collected by bees. (2mks)

SECTION B: 20 MARKS

Answer All Questions in this section.

16. The diagram below illustrates a cross section of a livestock handling structure. Use it to answer questions that follow.

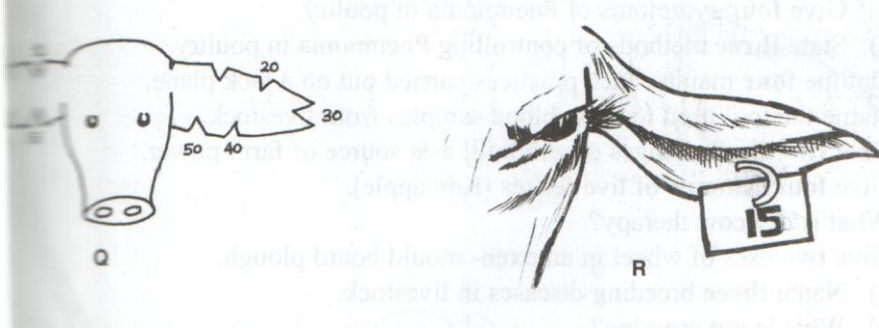
Study the diagram carefully and answer the questions that follow



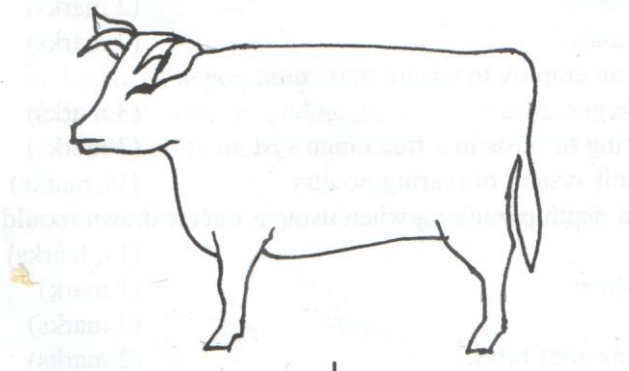
- a) Name parts. (4mks)
 - B –
 - C –
 - D –
 - E –
- b) Give the function of parts. (2mks)
 - B:-

D:-

17. Diagrams Q and R below illustrate a practice carried out on livestock. Study them and answer questions that follow.



- a) Identify methods Q and R. (2mks)
- b) Give one tool of carrying out practice Q. (1mk)
18. Diagram L below illustrates the external features of a cow. Study it carefully and answer the questions that follow.



- a) Using letter T with a pointing arrow indicate four areas where ticks are found. (3mks)
- b) Name two chemical methods of controlling ticks. (2mks)
- c) Name the type of animal giving a reason. (2mks)
19. A farmer wanted to prepare a 200kg of calf rearing ration containing 20% D.C.P. Using Pearson's square method calculate the amount of maize containing

10% DCP and sunflower containing 35% DCP the farmer would need to prepare the ration. (4mks)

SECTION C: (40 MARKS)

Answer any TWO questions in this section.

20. (a) Describe four methods used in fish preservation prior to marketing. (8mks)
(b) State four advantages of embryo transplant. (4mks)
(c) Describe four disease predisposing factors in livestock. (8mks)
21. (a) Compare and contrast ruminants and non-ruminants. (10mks)
(b) Describe five uses of water in the animal's body. (10mks)
22. (a) Describe five possible uses of a crush. (5mks)
(b) Explain five importance of dehorning animals. (10mks)
(c) State five reasons for swarming of bees. (5mks)